

DE LONG

WINE MAP OF ITALY

update February 1, 2011

YOU'LL NEED:

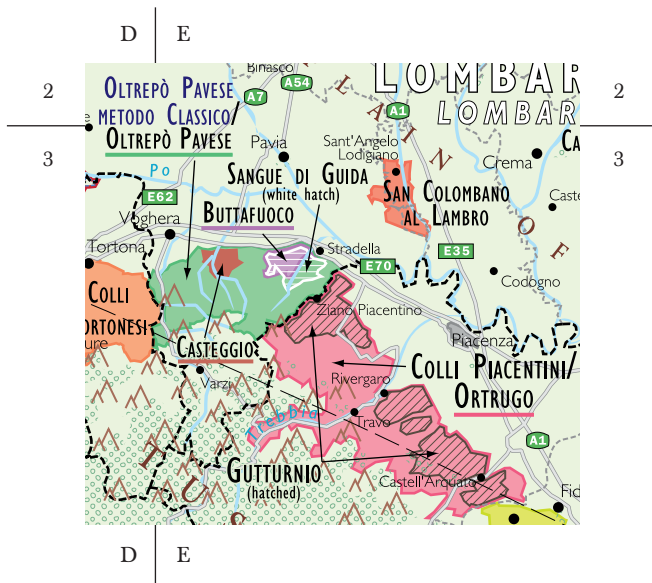
- an inkjet printer
- plain white paper
- scissors
- a gluestick

DIRECTIONS:

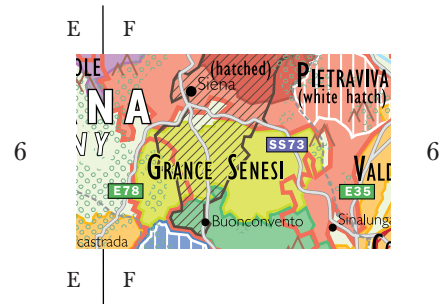
1. Make sure that your hands are clean and dry.
2. Print out this page on plain white paper using your inkjet printer's highest quality setting.
2. Cut out the updated areas below.
3. Apply glue with the gluestick to the back of the map piece you've just cut out.
4. Carefully place it on the map and gently press down.
5. Place a piece of paper over the map piece and rub gently.

for more info on wine map updates, see www.delongwine.com/updates

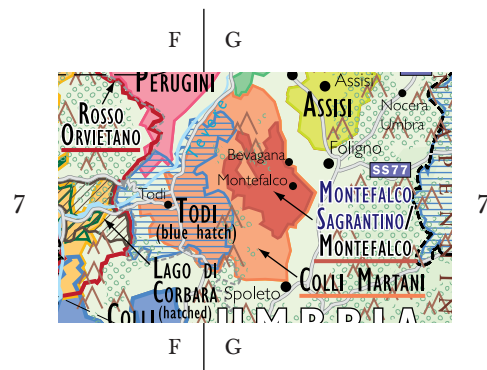
NEW DOCs: CASTEGGIO, BUTTAFUOCO, GUTTURNIO, SANGUE DI GUIDA



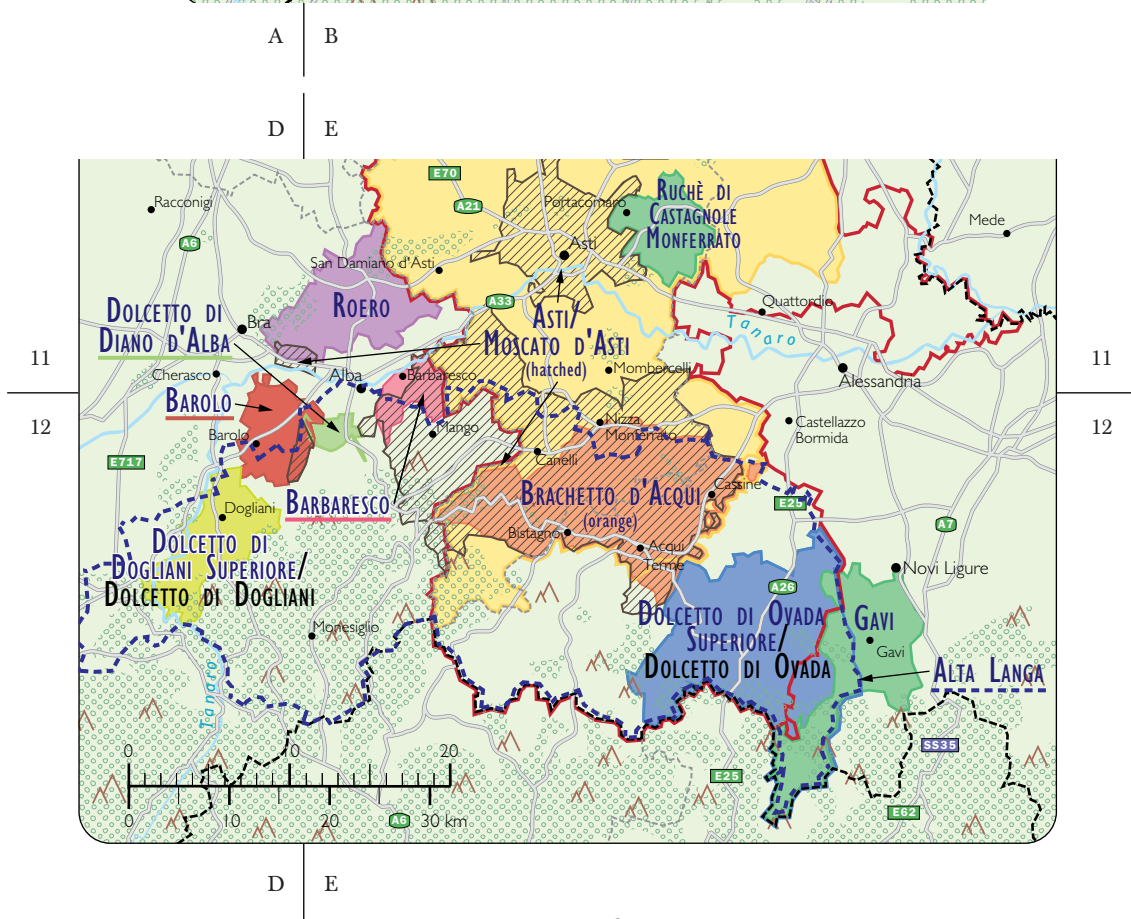
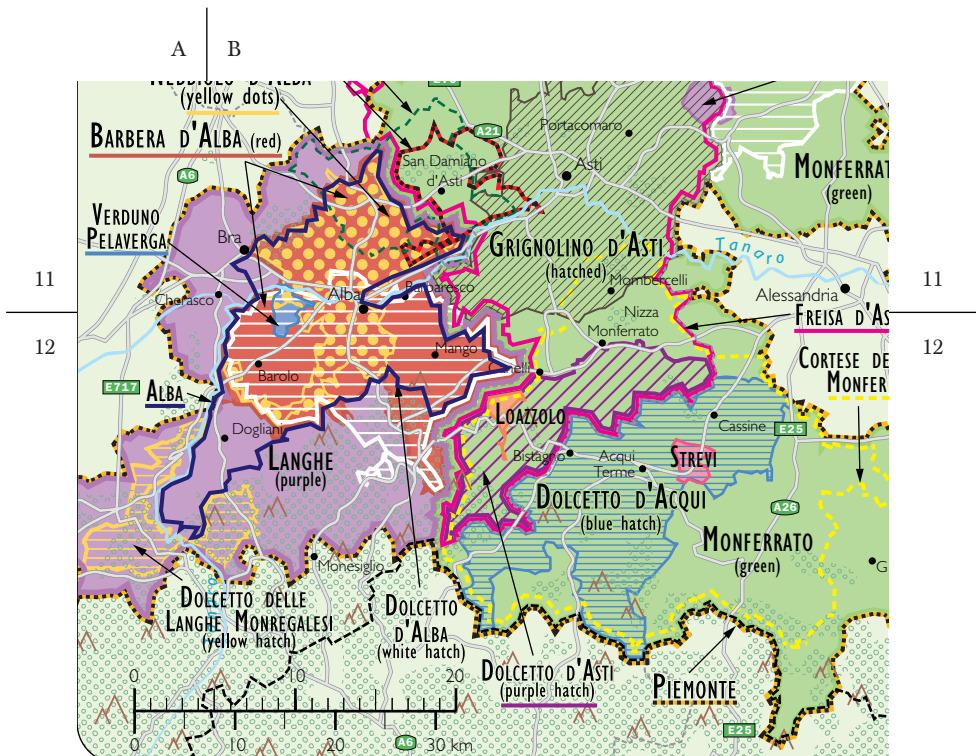
GRANCE SENESI DOC



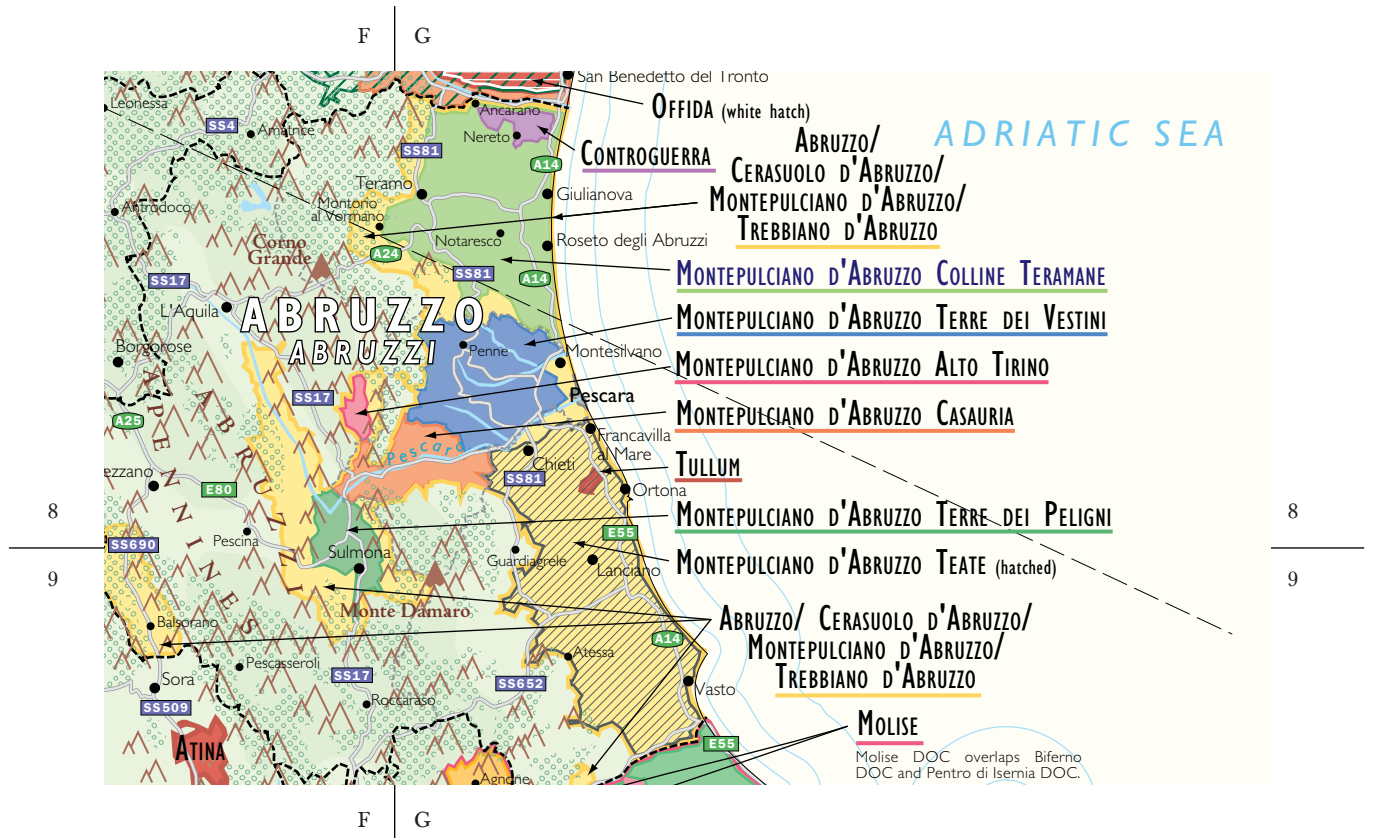
TODI DOC



NEW DOC: ALBA; ALTA LANGA & RUCHE' DI CASTAGNOLE MONFERRATO BECOME DOCGS



GENERAL ABRUZZO REMAPPING



To simplify things, Abruzzo DOC is a new overriding DOC that occupies the same area as Montepulciano d'Abruzzo DOC and Trebbiano d'Abruzzo DOC. Paradoxically, Cerasuolo d'Abruzzo DOC is a new DOC that shares the same area. Three subregions of Montepulciano d'Abruzzo DOC are also added: Alto Tirino, Terre dei Peligni and Teate.